



Jubilee

Celebrating 25 Years

2016

Anthony Abrahams
David Bailey
Nick Bibby
Don Brown
Ralph Brown
Jon Buck
Daniel Chadwick
Lynn Chadwick
Ann Christopher
Michael Cooper
Terence Coventry
Steve Dilworth
Abigail Fallis
Sue Freeborough
Antony Gormley
Steven Gregory
Damien Hirst
Steve Hurst
Jonathan Kingdon
David Mach
Alastair Mackie
Anita Mandl
Charlotte Mayer
Eilis O’Connell
William Pye
Peter Randall-Page
Lorraine Robbins
Almuth Tebbenhoff
William Tucker
Deborah van der Beek

Foreword

It is hard to believe that twenty-five years have passed since Gallery Pangolin made its entry onto the art scene with a modest stand at the 1991 Bath Art Fair. The initial inspiration behind the idea was to show off the finished bronzes cast by our foundry, which had not long before relocated to the Chalford Vale.

We were fortunate in that the foundry had just expanded into a larger unit with a former window showroom on the upper floor and with very little work this could easily be transformed into a basic exhibition space. It also had the advantage of a river frontage with great potential for showing sculpture outdoors.

With a group show titled 'Bronze Sculptures' and its accompanying catalogue, the new gallery opened its doors in early 1992. 'The Bronze Bird' came soon afterwards and became one of our best-remembered shows for its breadth of work and ambitious scope, including works by Rembrandt Bugatti, Lynn Chadwick, Anita Mandl, Nick Bibby and Jon Buck, as well as various casts from the Egyptian collection at the Ashmolean Museum.

Many other memorable landmarks have since followed. To acknowledge the vibrancy of Post-War British sculpture and to celebrate the work of Armitage, Brown, Chadwick, Fullard and their contemporaries, we opened the new century in 2001 with our first 'Vitalism' show. This was the beginning of our relationship with George Fullard's widow and family and we are now proud to represent his Estate.

Sculpture 2000 at Milton Keynes General Hospital was the first time we were commissioned to curate a major public exhibition at a different venue. For 'Sterling Stuff' in 2002 we gave a brief to fifty artists, inviting them to explore the possibilities of silver as a sculptural medium. So well-received was the exhibition, that the following year it was shown at the Royal Academy in London and subsequently travelled to Iceland. Invited by the Sigurjon Olafsson Museum to bring the show to Reykjavik, we were delighted to accompany a lively group of artists and their partners to the opening.

We had worked closely with Lynn Chadwick on the planning for 'Coming from the Dark', due to open in early May 2003. Sadly, Lynn died just a few days before and the show turned out to be his first memorial exhibition. In 2004, and again in 2005, we were invited by Dexia International in Luxemburg to curate a Chadwick one-man show followed by a mixed exhibition 'Out of the Melting Pot' in their park and gallery.

'Fire and Brimstone' in 2009 posed a challenge to a dozen invited artists to focus on the sensual possibilities of casting as part of their creative process. In exploring the alchemical qualities of fire and molten metal, the resulting inventive and thought-provoking sculptures were an exciting revelation.

More recently, the gallery's connections with the Gloucestershire area have strengthened and blossomed through our close involvement with Gloucester Cathedral. To mark the retirement of the then Dean in 2010, we were chosen to curate a major sculpture exhibition in the cathedral, its cloisters and close. 'Crucible' became known as 'the sculpture show of the decade' and touched the public imagination, bringing unprecedented crowds to the city. The exhibition was so successful that we were asked again and 'Crucible 2', with one hundred sculptures by sixty-one artists, took place in 2014. This time the show celebrated the Centenary of the Great War and that of Lynn Chadwick's birth.

In 2012 and after twenty years of service, our ex-window showroom had done us proud but was beginning to look its age and increasingly we felt it needed a makeover to bring it in line with our aspirations. Things had moved on in the art world in general and more specifically for us, in the world of casting technology. That July we closed our doors for the first time ever to allow the builders to move in. Over three months the gallery was transformed into a light and airy contemporary space which makes the most of our outlook on the river and provides the perfect setting for the exceptional sculpture and works on paper that we show.

Sparked off by a combination of demand from artists and developments in technology, our foundry has a continuing programme of research and investment into ever-better casting methods and solutions. This in turn means that we are now able to show work that would not have been possible to make twenty-five years ago. 'Jubilee' is a celebration of this evolution and demonstrates some of the best creative use of digital reduction, 3-D printing, burnout and vacuum casting, as well as traditional methods. Since 'Sterling Stuff' the possibilities of working with silver have expanded beyond recognition and the foundry now has a well-established and dynamic precious metals department.

Although much has changed in the intervening years, one constant pleasure has been in the relationships we enjoy with the artists with whom we work. Many have been with the gallery from its inception and have become good friends, especially those we represent and the self-appointed 'pangolin grannies' Anita Mandl and Charlotte Mayer. We have worked on many exciting projects together and our own success has been inextricably linked to theirs. This success of course is also completely dependent upon the loyal support and encouragement of our many clients, some of whom have been visiting the gallery since its earliest days.

The future is a busy one and presents challenges to which we look forward; we have artists and Estates to nurture and develop, more curatorial projects and collaborations, as well as an exciting programme of gallery exhibitions and accompanying catalogues, not forgetting several new monographs to add to our growing list of publications.

In the gallery world the challenge is to keep and excite the interest of both artists and clients by bringing fresh and engaging ideas to the table. 'Jubilee' has certainly stimulated some stunning and outstanding sculptures by its thirty artists and we hope you will share our delight in their variety and undeniable beauty.

Jane Buck
Claude Koenig



Silver Blade 2016
Anthony Abrahams
Sterling Silver
Edition of 9
22.5cm high



Comfortable Skull 2010
David Bailey
Sterling Silver
Edition of 20
9cm high

Photo & © 2010 David Bailey





Toad II 2016
Nick Bibby
Sterling Silver
Edition of 12
6cm high

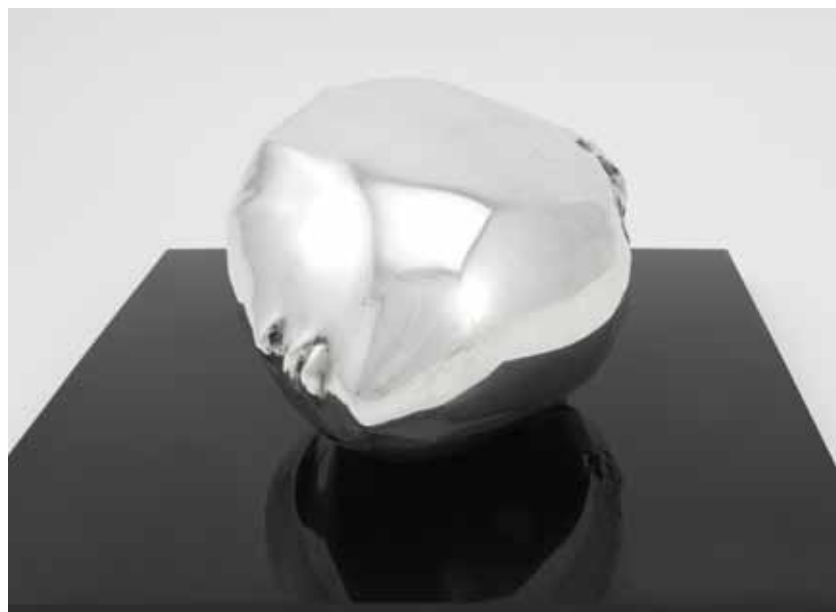




Yoko XL 2016
Don Brown
Sterling Silver
Edition of 6
30cm high

© The Artist, courtesy Sadie Coles HQ, London





Dream of Water 1985
Ralph Brown
Sterling Silver
Edition of 6
16cm high

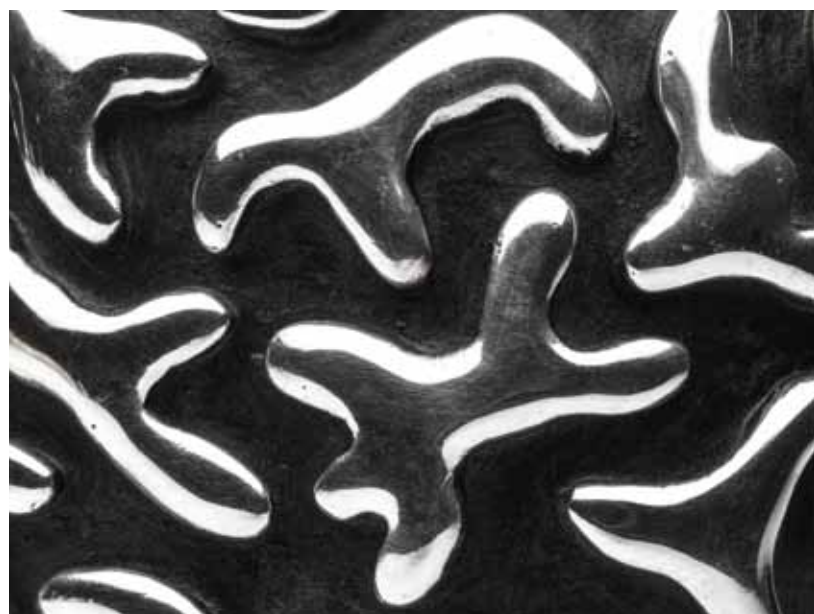


Argentum Vivum 2016
Jon Buck
Sterling Silver
Edition of 10
22.5cm high



Proteiform 2008
Jon Buck
Sterling Silver
Edition of 10
21.5cm high





Lexicon 2008
Jon Buck
Sterling Silver
Edition of 10
18cm high





Early Bird 2002
Jon Buck
Sterling Silver
Edition of 12
13.5cm high





Cigarettes 2016
Daniel Chadwick
Sterling Silver
Edition of 6
8.8cm high



Corkscrew 2016
Daniel Chadwick
Sterling Silver
Edition of 6
19.8cm high





Girl Walking into Wind 1982
Lynn Chadwick
Sterling Silver
Edition of 20
9cm high





Maquette VIII High Wind 1986
Lynn Chadwick
Sterling Silver
Edition of 20
18cm high



Maquette IV Walking Cloaked Figures 1978
Lynn Chadwick
Sterling Silver
Edition of 20
9cm high





Suspended Shadow 2014
Ann Christopher
Sterling Silver & Nitrile Cord
Edition of 14
8.5cm high

White Light 2008
Ann Christopher
Sterling Silver
Edition of 9
1.5cm high





Orang Utan 2010
Michael Cooper
Sterling Silver
Edition of 9
12cm high





Silver Avian I 2014
Terence Coventry
Sterling Silver
Edition of 20
6cm high



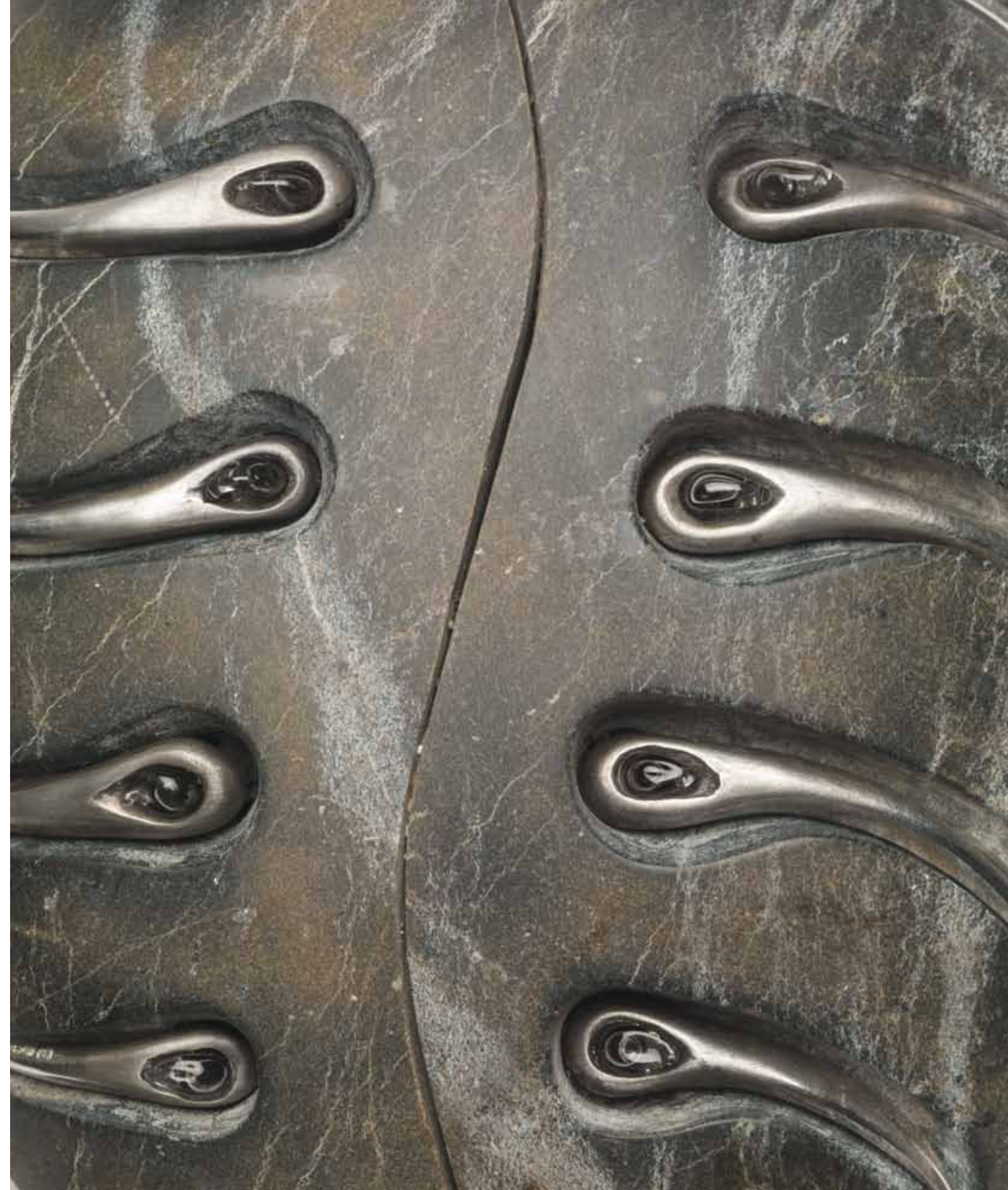
Silver Avian II 2014
Terence Coventry
Sterling Silver
Edition of 20
7cm high

Owl 2002
Terence Coventry
Sterling Silver
Edition of 10
14cm high





Burn Water 2016
Steve Dilworth
Dunite Stone, Sterling Silver,
Glass Phial of Burn Water
Unique
9cm high



Something Fishy 2016
Abigail Fallis
Sterling Silver
Edition of 6
2.5cm high





Triple Goddess 2016
Sue Freeborough
Sterling Silver & Stainless Steel
Edition of 10
18cm high



Cardinal Points 2002
Sue Freeborough
Sterling Silver & Stainless Steel
Edition of 10
16.5cm high





Home and Away 2002
Antony Gormley
Sterling Silver & Stainless Steel
Edition of 12
3.5cm high



One And All 2008
Steven Gregory
Sterling Silver
Unique
16cm high

© Steven Gregory. administered by DACS 2016





Sadness 2002
Damien Hirst
Sterling Silver
Edition of 12
7.5cm high

© Damien Hirst and Science Ltd. All rights reserved, DACS 2016





The Unknown Penitent 2016
Damien Hirst
Sterling Silver
Edition of 3
32.5cm high

© Damien Hirst and Science Ltd. All rights reserved, DACS 2016





Bestial Head I 2016
Steve Hurst
Sterling Silver
Edition of 6
9.5cm high





Bestial Head 2 2016
Steve Hurst
Sterling Silver
Edition of 6
10.5cm high





Pangolin 2002
Jonathan Kingdon
Sterling Silver
Edition of 10
8cm high

It Takes Two 2002
David Mach
Sterling Silver
Edition of 12
12.5cm high





Kong 2008
David Mach
Sterling Silver
Edition of 8
15.5cm high

Maquette For Self-Portrait 2008
Alastair Mackie
Sterling Silver
Edition of 12
5.5cm high



Armadillo 2002
Anita Mandl
Sterling Silver
Edition of 6
8.5cm high



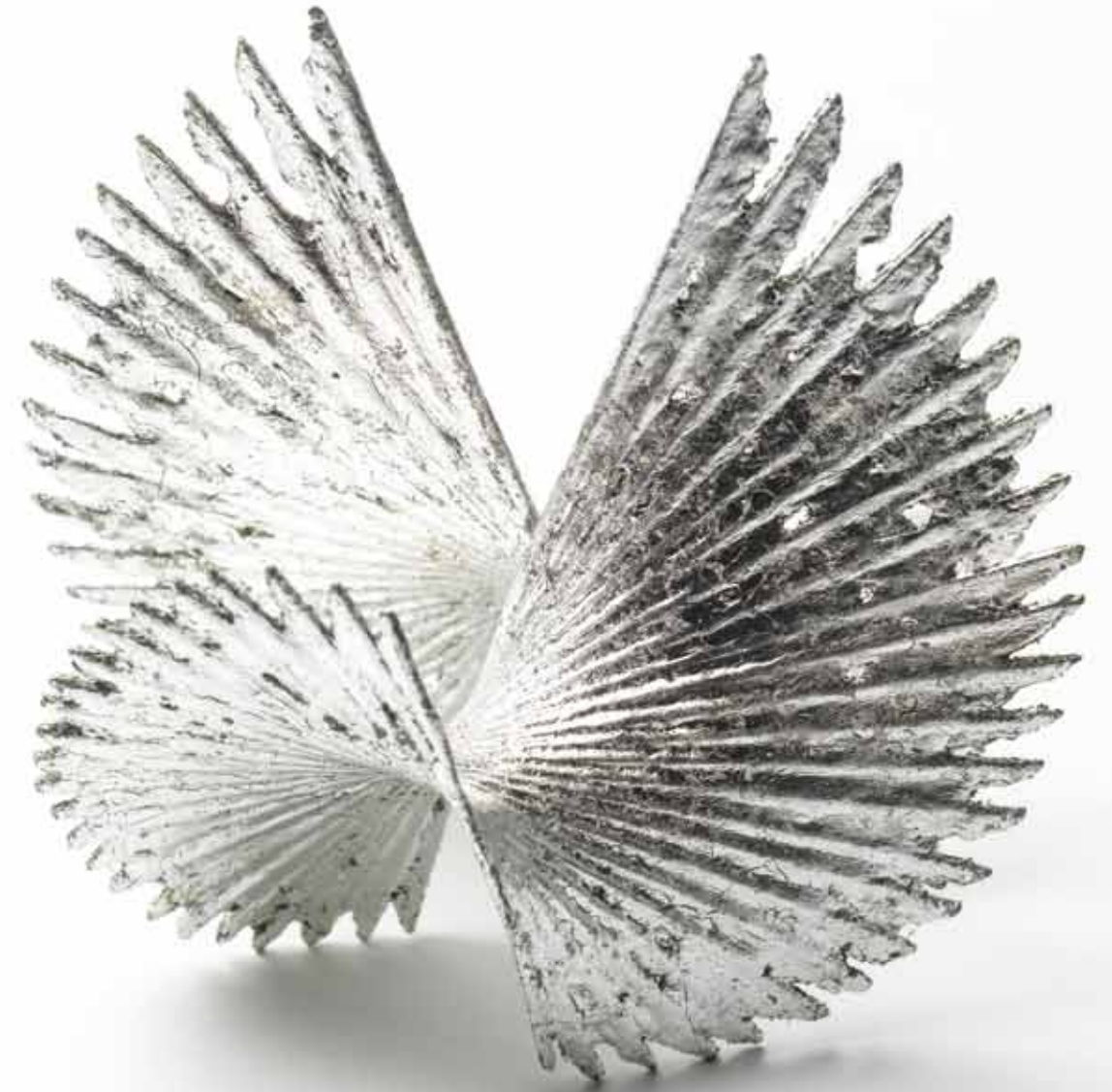


Silver Penguin 2016
Anita Mandl
Sterling Silver
Edition of 6
15cm high





Young Vole 2008
Anita Mandl
Sterling Silver
Edition of 6
8cm high



Rondel 2016
Charlotte Mayer
Sterling Silver
Edition of 8
14.5cm high



Sublime Geometry 2016
Eilis O'Connell
Sterling Silver
Edition of 10
7.5cm high



Cluster 2002
William Pye
Sterling Silver
Edition of 8
13.5cm high





Accretion 2016
Peter Randall-Page
Sterling Silver & Lead
Edition of 4
7cm high

Celestial Chariot 2014
Lorraine Robbins
Sterling Silver & Bronze
Edition of 20
9cm high





Sacred Circle 2016
Almuth Tebbenhoff
Sterling Silver & Granite
Edition of 7
17cm high





After Matisse I 2008
William Tucker
Sterling Silver
Edition of 10
7cm high



After Matisse II 2008
William Tucker
Sterling Silver
Edition of 10
7cm high



Dancer After Degas 2002
William Tucker
Sterling Silver
Edition of 10
13.5cm high



Bull 2016
Deborah van der Beek
Sterling Silver & Bronze
Unique
15cm high





Catalogue Design: Gallery Pangolin
Photography: Steve Russell Studios except where stated
Printing: Healeys Print Group

GALLERY PANGOLIN
9 CHALFORD IND ESTATE CHALFORD GLOS GL6 8NT
T: 01453 889765 F: 01453 889762 E: gallery@pangolin-editions.com
www.gallery-pangolin.com



