

GALLERY PANGOLIN

Christmas Cracker!

18th November - 15th December

■ Tucked away in the village of Chalford on the slopes of the Cotswold escarpment, Gallery Pangolin is one of the few galleries to specialise in sculpture and related works on paper. Over the past twenty-four years the gallery has established a reputation for works of quality and excellence by Modern and contemporary artists.

■ This year our popular Christmas exhibition features bronze and silver sculpture, sculptors' jewellery, limited edition prints and unique drawings by all of our regular gallery artists as well as some less familiar names. We also have a selection of art books and catalogues which make ideal presents.



Leaf Form
Charlotte Mayer

■ Gallery Manager Sally James says 'It's that time of year again! Pop along to the gallery to see the many tempting artworks we have on show.'

■ Artists include Anthony Abrahams, Harold Ambellan, David Bailey, Nick Bibby, Hamish Black, Jon Buck, Daniel Chadwick, Lynn Chadwick, Ann Christopher, Geoffrey Clarke, Michael Cooper, Terence Coventry, Roy Exley, Sue Freeborough, George Fullard, Jonathan Kingdon, Jeff Lowe, Anita Mandl, Charlotte Mayer, Breon O'Casey, Lorraine Robbins, Almuth Tebbenhoff, Jason Wason and Deborah van der Beek.

■ Among the many highlights of the show we have Lynn Chadwick's dainty silver sculpture, 'Girl Walking into Wind', three exuberant new coloured drawings by Jon Buck, a festive pair of turkeys by Jonathan Kingdon and Jason Wason's contemplative 'Templetop Vessel'.

GALLERY PANGOLIN

Christmas Cracker!

18th November - 15th December



Silver Blade
Anthony Abrahams



Hot Bird
Jon Buck



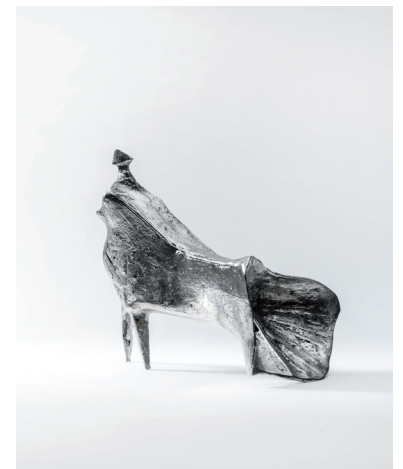
Fantail Turkey
Jonathan Kingdon



Outside the Shadows 20
Ann Christopher



Templetop Vessel
Jason Wason



Girl Walking into Wind
Lynn Chadwick

For further information please contact Sally James or Jane Buck on **01453 889765**

The Gallery is open Monday to Friday 10am to 6pm and Saturday 10am to 1pm



GALLERY PANGOLIN
9 CHALFORD IND ESTATE CHALFORD GLOS GL6 8NT
TEL 01453 889765 FAX 01453 889762 EMAIL gallery@pangolin-editions.com
www.gallery-pangolin.com