

GALLERY PANGOLIN

Jon Buck

Making a Point : The Point of Making

Three Decades of Sculpture, Prints and Drawings

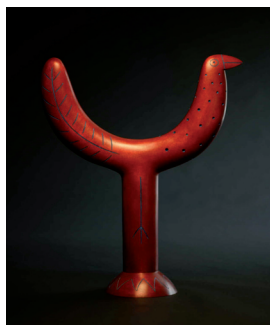
31st October - 17th December 2011



My Pretty Chicken
1983



Goddess
1999



Wishbone Bird
2005



Deep Down Dog
2009



Flashback
2011

- The first major review of the artist's work spanning three decades.
- The exhibition explores the evolution of Buck's sculptural language and philosophy through his individual and striking imagery.
- Highlights include: A rare narrative painted-resin head from 1983 '**My Pretty Chicken**'. Sensitive and touching 'embrace' pieces from the 1990's including '**Family**' and '**Embrace II**'. Powerful and symbolic bronze '**Goddess**' first shown in 2000. '**Wishbone Bird**' a brightly-coloured iconic piece from 2005. Stunning painted bronzes '**Biomorph**' and '**Deep Down Dog**' first shown in 2009. '**Flashback**', one of three previously unseen works made especially for the exhibition.
- A new 124-page hardback book accompanies the exhibition with over 100 colour illustrations of Buck's sculpture, prints and drawings, illustrating the growth of his ideas and images.
- The book includes a personal perspective by the artist giving a unique insight into his preoccupation with 'the magic of making' and an illuminating introduction by bronze-founder **Rungwe Kingdon**.

For further information please contact Sally James or Jane Buck on **01453 889765**

The Gallery is open Monday to Friday 10am to 6pm and Saturday 10am to 1pm



GALLERY PANGOLIN

9 CHALFORD IND ESTATE CHALFORD GLOS GL6 8NT

TEL 01453 889765 FAX 01453 889762 EMAIL gallery@pangolin-editions.com

www.gallery-pangolin.com