

GALLERY PANGOLIN

Charlotte Mayer In Essence

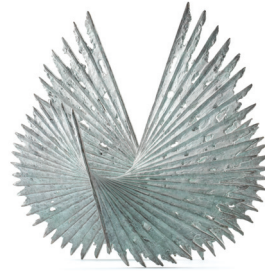
14th October - 22nd November



Storm Bird
2013



The Thornflower
2006



Small Rondo
1999



Corydon
1972

■ The first major review of the artist's work, this important show traces the development of Mayer's themes and preoccupations and includes work from 1972 up to the present.

■ Now in her eighties, Mayer is as passionate as ever about her craft and continues to produce sculptures of great eloquence and subtlety which have the power to reach us all.

■ Highlights include '**Corydon**' 1972, one of a series inspired by Manhattan skyscrapers on a trip to New York; '**The Thornflower**' 2006, made in commemoration of Mayer's grandmother who perished at Treblinka and '**Storm Bird**' 2013, one of Mayer's most recent pieces which will be shown for the first time.

■ A new 112-page hardback book accompanies the exhibition with over 100 colour illustrations and text by author and art historian Tom Flynn.

■ The book tells the moving story of Mayer's life and career and traces the influences, inspirations and personal experiences which have shaped her work from her idyllic childhood in pre-war Czechoslovakia to the present day.

The Gallery is open Monday to Friday 10am to 6pm and Saturday 10am to 1pm

For further information please contact Sally James or Jane Buck on **01453 889765**



GALLERY PANGOLIN

9 CHALFORD IND ESTATE CHALFORD GLOS GL6 8NT

TEL 01453 889765 FAX 01453 889762 EMAIL gALLERY@pangolin-editions.com

www.gallery-pangolin.com