

GALLERY PANGOLIN

Out of the Block

Michael Cooper

31st July - 4th November



Michael in his studio

Photo Kate Cooper

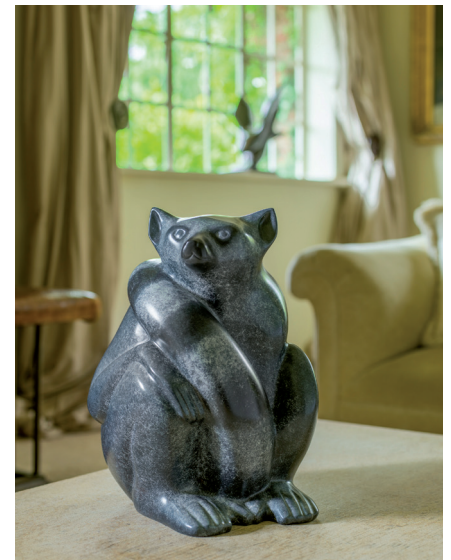
Michael Cooper's sculpture is a study in the wide variety of animal, bird and human figures, carved deftly and with assurance in marble and stone, or cast into bronze, allowing the beauty and essence of each animal to be revealed. Cooper's patient process, of long hours spent chipping away and carving into stone or marble imparts a deep, quiet energy about each subject. As such, the surface of each sculpture is made palpably tactile, both drawing the viewer in and provoking the sense of touch.

Of his process, Cooper explains:

"As I carved a block of stone, it became possible to harmonise with the material and work in partnership with it rather than in conflict. The physical effort of carving and the concentration required produce a very precise focus, suspending the usual thought process and allowing another part of me to function."

Michael Cooper was born in Dublin in 1944, before moving to England where he studied at Heatherly's School of Art from 1969 until 1971. He now lives and works in Buckinghamshire, and is a Fellow of the Royal Society of Sculptors. His work is held in public and private collections around the world, and he has exhibited widely, including: Jersey and London Zoos, Yorkshire Sculpture Park, the Royal Academy of Arts, and the Gloucester Cathedral Crucible exhibitions (2010 & 2014). Cooper is also acclaimed for his public commissions, notably a reclining figure in Travertine marble at Covent Garden, and three bears in Belgian Fossil Marble at Bicester Village, Oxfordshire.

Gallery Pangolin is extremely excited to be presenting 'Out of the Block', an exhibition of Cooper's work in bronze, stone and marble. The catalogue accompanying the exhibition will feature a selection of Cooper's work photographed in his home and garden in Buckinghamshire. Photography will be by Steve Russell Studios and catalogue text by Rungwe Kingdon.



Lemur

Photo Steve Russell Studios

Further information can be found on the gallery website:

www.gallery-pangolin.com or please contact Sally James or Cath Ingram on **01453 889765**

9 Chalford Ind. Estate Chalford Stroud GL6 8NT England
T: 0044 (0) 1453 889765 F: 0044 (0) 1453 889762 E: gallery@pangolin-editions.com
www.gallery-pangolin.com